

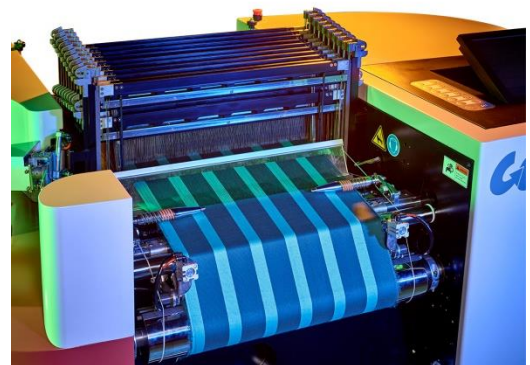
A Better Sampling Experience with Upgraded Version



CCI Launches Evergreen II with Significantly Increased Speed, Convenient Maintenance, Smooth Weft Delivery and Self-diagnostic Function

CCI proudly announces the latest update to its sampling loom product family, Evergreen II. The upgraded version includes all the features of the previous model Evergreen, and it delivers advanced solution with increased speed, convenient maintenance door, a stand-alone creel for stable weft delivery, self-diagnostic function and new exterior design.

The completeness of Evergreen II enables a large increase in weaving speed and improved accuracy in operations with a maximum of 100 ppm, thereby maximizing the overall productivity for textile applications. To cope with higher speed, we install and upgrade the buffer system to ensure more smooth and stable movement. The improvement meets the requirements of superb operation for sampling while takes extensive yarn types into consideration. It ensures high degree of accurate motions to have better handling of various yarn kinds, thus is capable of producing a wide array of woven samples from upholstery, apparel to industrial fabrics etc. In order to perform convenient maintenance and repair, the machine incorporates an easy-to-access door for conducting maintenance, further cutting down on time wasting and associated costs.



Different from the previous version, Evergreen II utilizes a stand-alone yarn creel instead of incorporated creel device on the machine. The creel can significantly improve weft yarn delivery to the machine, avoiding the possibility of yarn breakage. For quicker troubleshooting, the self-diagnostic function is available to display cause of the problem on screen so the user can easily identify the problem and possible solution. Additionally, this new machine has an ergonomic and sleek exterior design which not only conveys the spirit of the brand new version, but also has a better mechanism configuration to support higher performance.

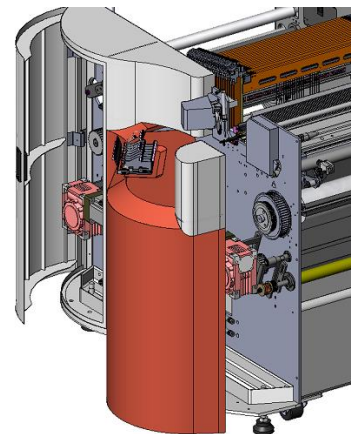
The upgraded version Evergreen II is equipped with a few new features and still remains advantage of extreme space efficiency for small scale environments, with users making full use of the machine to work in a more effective way and get into the market easier and faster.

Large Increase in Overall Speed

The machine increases the overall speed substantially, and improves the accuracy between the weaving motions. To cope with higher speed, we install and upgrade the buffer system to ensure more smooth and stable movement.

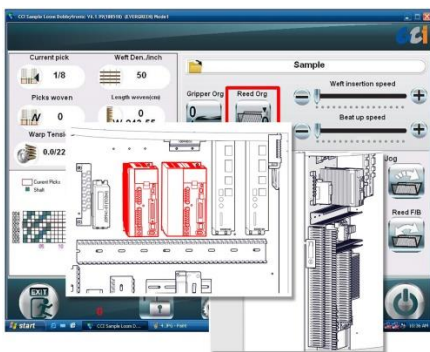
Access Door for Easy Maintenance

For efficient maintenance and repair works, the machine provides an easy-to-access door to create quick access and convenient maintenance, further cutting down on time wasting and associated costs.



Computer Operation

The computer-controlled technology delivers easy operation and high system stability. The latest controller consists of the Windows operating system, touch screen and new software. In addition, the user-friendly iconic interface gives the best experience in operation.



Self-diagnostic Function

The self-diagnostic function checks the status of internal devices in real time. If an error occurs, the cause of the problem will be displayed on screen so the user can easily identify the problem and possible solution.



Stand-alone Creel for Smooth Weft Delivery

Instead of incorporated creel device on the machine, the stand-alone creel is fabricated for delivering weft yarn horizontally to sampling loom, which avoids yarn breakage for higher weaving efficiency.

News | Brochures | Videos | eNewsletters | Technological Highlights | Success Stories | Contact Us

For more information or pricing, please visit our new Website at <http://www.ccitk.com>.

